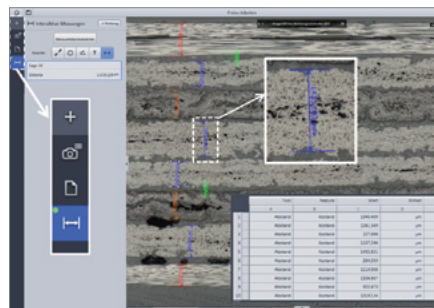


ZEISS ZEN 2 core – Smart. Precise. Open.

Imaging Software Simplified.



Screenshot of ZEISS ZEN 2 core



Job template for repetitive sample analysis

Imaging Software for Efficient Microscopy

ZEISS ZEN 2 core combines maximum flexibility with minimum complexity in a single piece of software. Put this powerful software, with its ease of use and straightforward design, together with established ZEISS hardware and you will experience all-out best-in-class microscopy. For everyday use when you're running routine tasks with repeatable results, ZEN 2 core keeps it simple and gives you total efficiency.

But when you need to tease out the highest technical performance from your microscope, ZEN 2 core delivers maximum flexibility with access to every functionality and parameter you might wish to optimize.

ZEN 2 core lets you create task-specific "workbenches" that show only the required microscope controls on the screen. Combine these workbenches to create dedicated "jobs" to guide your operator through a defined flow of consecutive tasks. A dedicated user management allows you to set permissions so that each operator will have access to exactly the workbenches and jobs he needs.

Module Packages

ZEN 2 starter:

- Free basic version (no license necessary)
- Fully controls ZEISS microscope cameras
- Basic features included
- Extend this version with specific modules for your applications

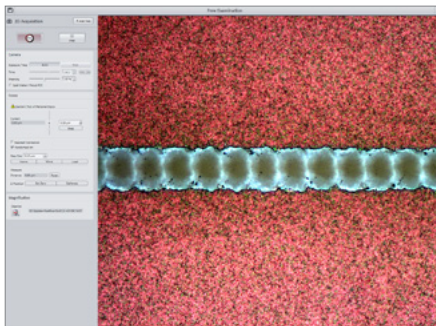
ZEN 2 core:

- Fully controls ZEISS cameras and light microscopes
- Optimized for repetitive sample analysis (job concepts)
- Large range of standard features
- Expandable with task specific features
- Correlative Microscopy between light and electron microscopes

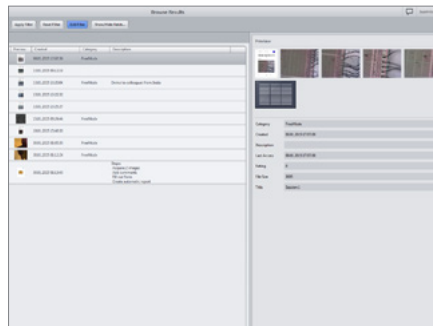


ZEISS ZEN 2 core – Smart. Precise. Open.

Imaging Software Simplified.



ZEISS ZEN 2 core workbench with live image



ZEISS ZEN 2 core archive view

Smart: Easy-to-Configure User Interface for All Types of Tasks

ZEN 2 core gives you the benefit of an adaptive user interface suited specifically to industrial and research customers. The easy graphical user interface (GUI) configuration fits tasks of all kinds and of any complexity. Your tasks will be adapted perfectly by ZEN 2 core and supported by the new GUI.

Precise: Fast, Repeatable, Reproducible Results

Given its straightforward workflows, you can count on fast, reproducible analysis and measurement results with ZEN 2 core. ZEN 2 core is intuitive to use and adapts quickly to different tasks in an intelligent and flexible manner. Its ability for creating job templates gives you peace of mind, knowing you will get the same reliable results every time.

Open: Works with Other Software Platforms and Hardware Accessories

ZEN 2 core offers you an interface to many other software platforms and hardware accessories. It controls Linkam heating stages and ZEISS autofocus hardware and also features a connection to ImageJ. In addition, your ZEN 2 core comes with a scripting interface for programming (Open Application Development) that allows you to adjust the software to your specific needs.

Technical Data

Standard features

- Control ZEISS microscopes and components interactively
- Control all ZEISS microscope cameras
- Generate workbenches for repetitive application tasks
- Acquire single and panorama images
- Create extended depth of focus images using the manual focus your microscope
- Use the extensive measurement functions to evaluate your sample
- Creation of Microsoft Word® reports
- Creation of Report Templates using Microsoft Word® Add-In
- Data archive for save of images and documents
- Data archive to manage templates
- Export your images to ImageJ

Optional features

- Use powerful image analysis tools
- Create extended depth of focus images using the motorized focus your microscope
- Acquire tiled images
- Benefit from a software-autofocus
- Expand the capability of ZEN 2 core with the macro environment
- Correlative Microscopy between light and electron microscopes



microscopy@zeiss.com
www.zeiss.com/zen2core



Autorisierter Fachhandelspartner:
Pulch + Lorenz Mikroskoptechnik
Am Untergrün 23, D-79232 March
tel: 07665 9272-0
fax: 07665 9272-20
mail: kontakt@pulchlorenz.de
web: pulchlorenz.de

